

UNIQUE FEATURES

CONTINUOUS OPTICAL ZOOM



Most thermal cameras offer a multi-field-of-view or step-zoom. For instance, if it is necessary to see farther out, the operator must step between the fields of view, causing a temporary loss of the target image. The DefendIR CZ has a true, continuous optical zoom, giving the user the ability to change fields of view while keeping the target in focus, adding an additional layer of security.

CUSTOMIZATION



Not all security installations need the same camera configuration at each location. With this in mind, ICx Imaging Systems has created 12 lens and detector combinations including single-field-of-view, dual-field-of-view, and continuous zoom options for the DefendIR, giving users the ability to customize the system to meet their detailed range performance requirements. All cameras are manufactured in our US ISO 9001 certified manufacturing facility.

VISIONSENSE TECHNOLOGY



Our proprietary VisionSense™ capability allows users to overlay the daylight camera image and infrared camera image in real time. Through user-controlled, customized mixing and merging of the two visual sources, our imagers penetrate glare and see through windows, glass or water. These elemental challenges are highly problematic for conventional forward looking infrared (FLIR) cameras.

THE ICx TOTAL SOLUTION

VIDEO ANALYTICS



The optional Scene Analyzer™ from ICx provides security professionals with 24/7 automated monitoring and object detection while ignoring motion due to changes in lighting and weather conditions. The Scene Analyzer automatically adapts to lighting changes and irrelevant motion, such as the movement of trees or waves in the ocean, effectively reducing nuisance alarms.

RADAR



ICx radars can be paired with multiple cameras for a 'slew-to-cue' auto tracking solution. The radars can accurately detect personnel and vehicles ranging from 350 meters to 12 kilometers and operate in virtually any climate, weather or lighting condition, resulting in continuous 360° surveillance.

COMMAND & CONTROL SOFTWARE



ICx Cameleon™ software has the ability to control virtually any number and combination of analog and IP devices from different manufacturers with point-and-click simplicity. Cameleon seamlessly integrates cameras, monitors, switchers, DVRs and a host of other devices. Custom-developed device drivers allow the integration of legacy equipment to ensure a cost effective, adaptable security solution.

EXTENDED WARRANTY PROGRAMS

We provide a wide array of warranty programs to fit evolving customer needs. With the best lead repair time and flexibility in the industry, we pride ourselves on persistent customer service.

Extended Warranty Options	Silver	Gold	Platinum	Diamond
Coverage	All parts & labor except infrared detector	All parts & labor	All parts & labor	All parts & labor
Response Time (from receipt of camera)	10 - 20 days	10 - 20 days	5 - 10 days <small>If the repair exceeds 10 days, a temporary replacement camera will be provided until repairs are complete.</small>	24 - 48 hours <small>Within 24-48 hours, a service technician will perform an onsite repair. If onsite repair cannot be completed, a temporary replacement camera will be provided until repairs are complete.</small>
Temporary Replacement camera provided	—	—	■	■
Telephone Support (24/7)	■	■	■	■
Firmware upgrades**	■	■	■	■
Annual Preventative Maintenance Inspection				
<ul style="list-style-type: none"> System diagnostic Replace all camera seals Inspection of motors & gears Desiccant replacement Exterior cleaning Replacement lens cleaning kit 	—	—	■	■
Discount on "Out-of-Warranty Repairs"	—	—	10% OFF	25% OFF
Discount on "Camera Accessories"	—	—	10% OFF	25% OFF

CUSTOMER SERVICE

Our revenue has tripled in three years due to repeat customers. Please read what some of them have said...

"...I wanted to take a moment to say how pleased I was with the support showed by your representative from ICx Imaging Systems. With his help and the help of his team back at the shop, we had loaner cameras and new cables shipped and onsite within 24 hours. With his help all ICx cameras were up and operable for our Force on Force drills the next day. Thanks again for sending us such a quality representative. I look forward to working with ICx in the future on other camera issues or purchases. Keep up the great work."

- Nuclear Technical Security Coordinator

"ICx has patiently talked me through a number of semi-emergencies where time and circumstances would not allow the normal course of action. One of those occasions involved me standing in a field trying to help my customer make some configuration changes in front of his customer. No pressure there. With ICx Imaging Systems' patient and ever-ready help, it has all worked out."

- Manager, Homeland Security Systems, Business Development

"I wanted to thank you and your team for rallying to get us 100% of Q3 cameras we requested on such short notice. We were able to realize a good chunk of upside, and get all of our projected units out as a result of the extra effort. Thanks again for being able to adjust to our changing needs and helping us realize a good quarter."

- Chief Financial Officer

ICx Technologies
Systems Central Sales
515 Cooper Commerce Drive
Suite 150
Apopka, FL 32703

T + (toll free) 1.866.458.ICXT (4298)
F + 1.407.814.1513

www.icxt.com



DefendIR Series

THERMAL IMAGING CAMERAS

The DefendIR is an industry leading mid-range thermal imager that can see in complete darkness and through a multitude of environmental conditions including smoke, rain, snow, dust and dense fog. The DefendIR is based on Forward Looking InfraRed (FLIR) technology developed for the US Military. The DefendIR is ideally suited for day and night perimeter security, maritime surveillance and DHS/DoD applications. The ruggedized housing is environmentally sealed and certified to meet NEMA4X and IP66 specifications, standing up to the most challenging weather and temperature conditions. Offering 144 different configuration options, each camera can be customized to meet detailed range performance and site integration requirements. Combined with a true continuous optical zoom and state-of-the-art video analytics, the DefendIR series offers a ground breaking integrated surveillance solution.



EASE OF INTEGRATION



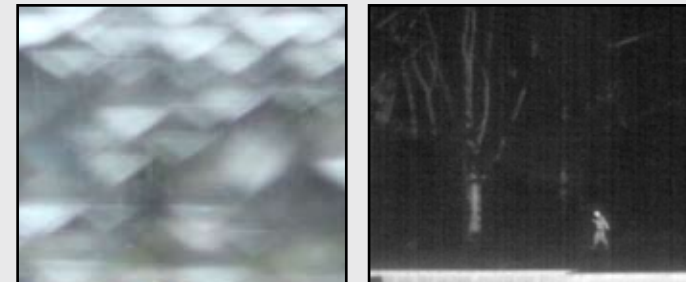
4 screws

1 cable

Specifically designed to be “the easiest camera on the market to install and maintain,” the DefendIR series requires only four screws and one cable to mount, install and integrate into most security infrastructures. In an era of increasing interoperability challenges, we believe that ease of integration and long-term durability have become the two most important factors to the security professional.

IMAGE QUALITY

PERFORMANCE IN HARSH ENVIRONMENTS



HEAVY RAIN



SMOKE & FOG



BRIGHT LIGHTS

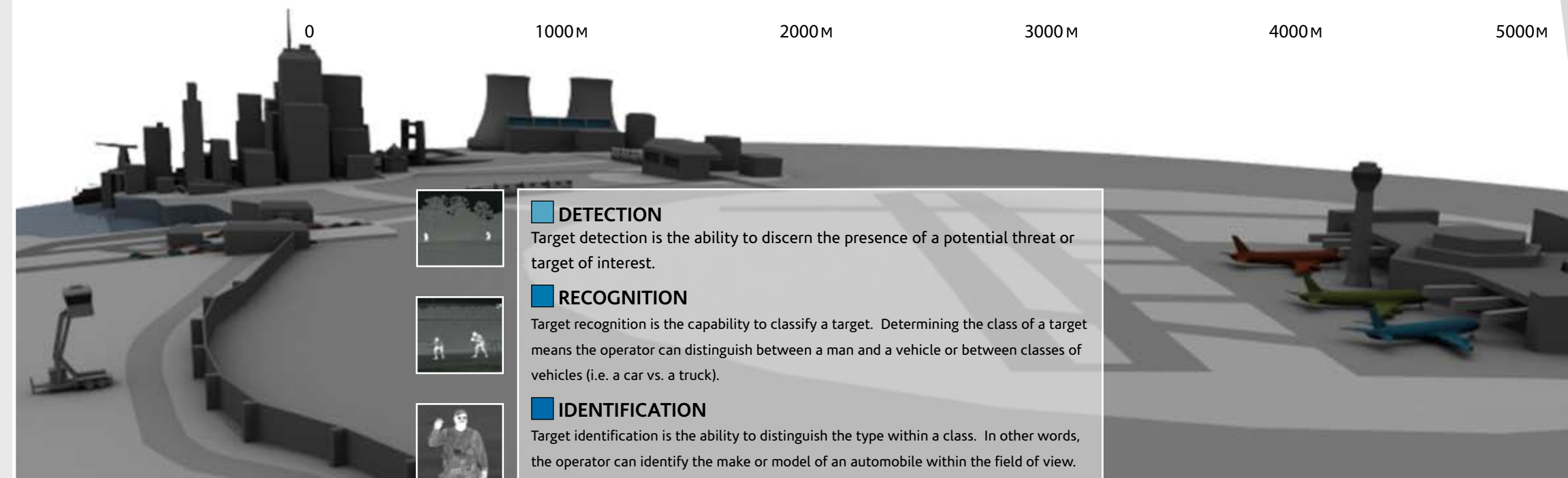
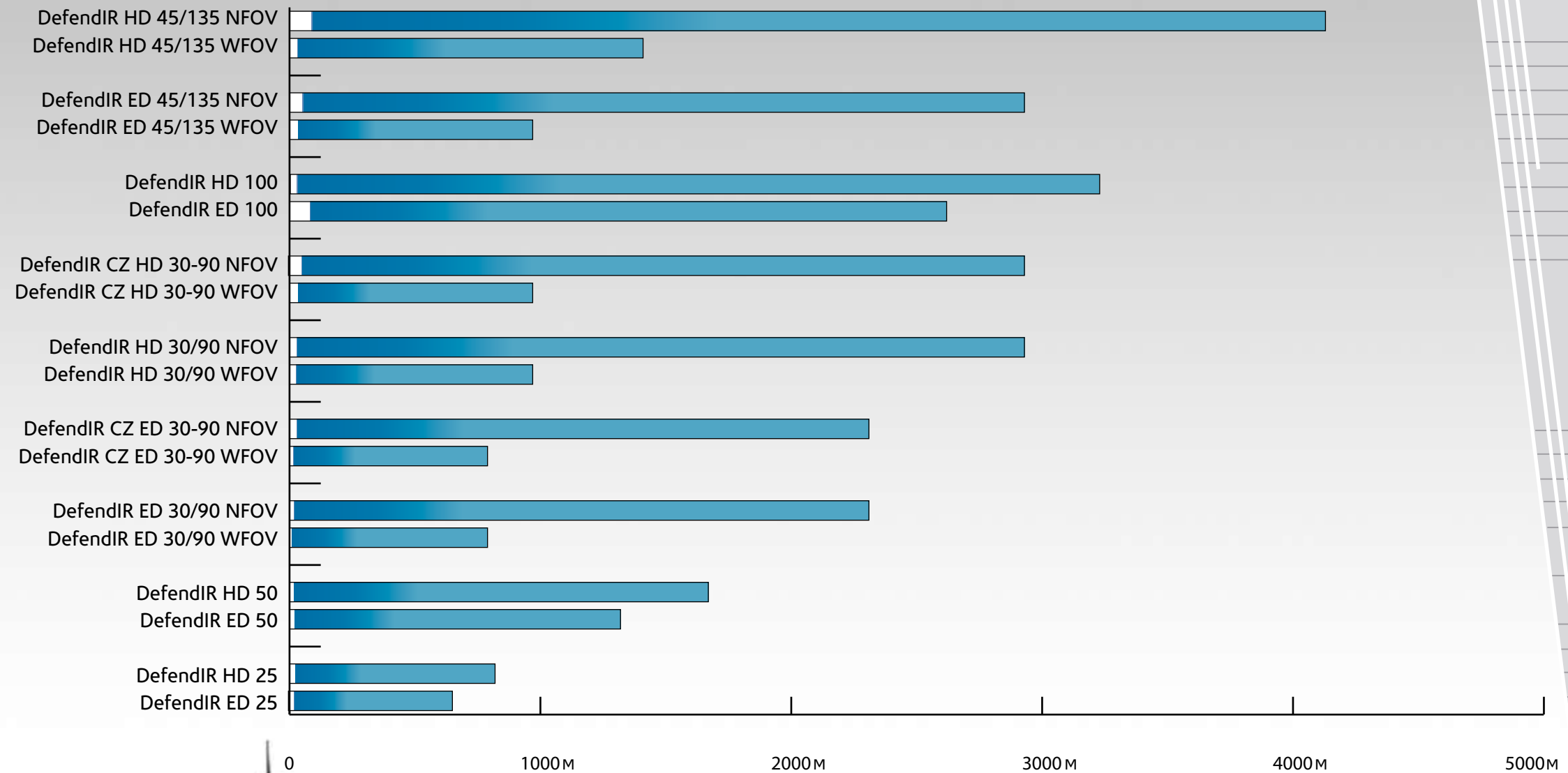


SHADOWS



MARITIME

RANGE PERFORMANCE (for a Man Size Target)



SPECIFICATIONS

CAMERA OVERVIEW

Video Output	RS-170 (NTSC) or CCIR (PAL)
Serial Interface	RS-232, RS-422, RS-485
Power Input	10-28 VDC or 220/110 VAC 50/60 Hz
Power Consumption	<22 Watts (nominal)
Weight	<15 lbs.
Operating Temperature	-40° to +60° C
Environmentally Sealed	NEMA 4X & IP66 Certified
Azimuth Control	Continuous 360°
Elevation Control	-80° to +80°
Pan & Tilt Slew Rate	0° / sec to 110° / sec
Pointing Accuracy	Pan ± 1/2 ° Tilt ± 1/2 °

THERMAL SENSOR

Detector	Uncooled, Vanadium Oxide Microbolometer
Frame Rate	30 hz (60hz optional)
Resolution	320 x 240 640 x 480 (coming soon)
Spectral Response	LWIR
IR Lens Options	25mm, 50mm, 100mm, 30/90mm, 45/135mm or 30-90mm Continuous Zoom
IR Zoom	2x and 4x Digital Zoom
Focus	Manual (Standard) Automatic (Optional)
Thermal Time Constant	<30 msec
Detector / Pixel Size	37.5µm or 25µm
Gain / Level Controls	Automatic or Manual
NETD	<50 mK for US Customers <85 mK for International Customers

VISIBLE SENSOR

CCD Camera	Narrow FOV 2.0° Wide FOV 42°
Image Stabilization	Yes (Optional)
Zoom	Optical: 26x Digital: 12x Total: 312x
Minimum Illumination	2.0 lux/1/60 sec (NTSC) 0.14 lux/1/4 sec (NTSC)
Starlight Mode	0.7 lux/1/60 sec (NTSC) 0.05lux/1/4 sec (NTSC)

